

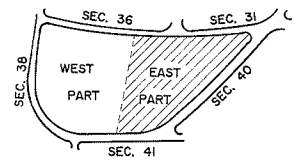


NOTE:  
 THE LOT NUMBER IS PLACED IN THE UPPER RIGHT  
 HAND CORNER OF LOT AS YOU FACE THE LOT  
 AND IS INDICATED THUS

LOCATION OF GR. MARKERS SHOWN THUS  
 ARROW INDICATES DIRECTION GR. MARKERS FACE.

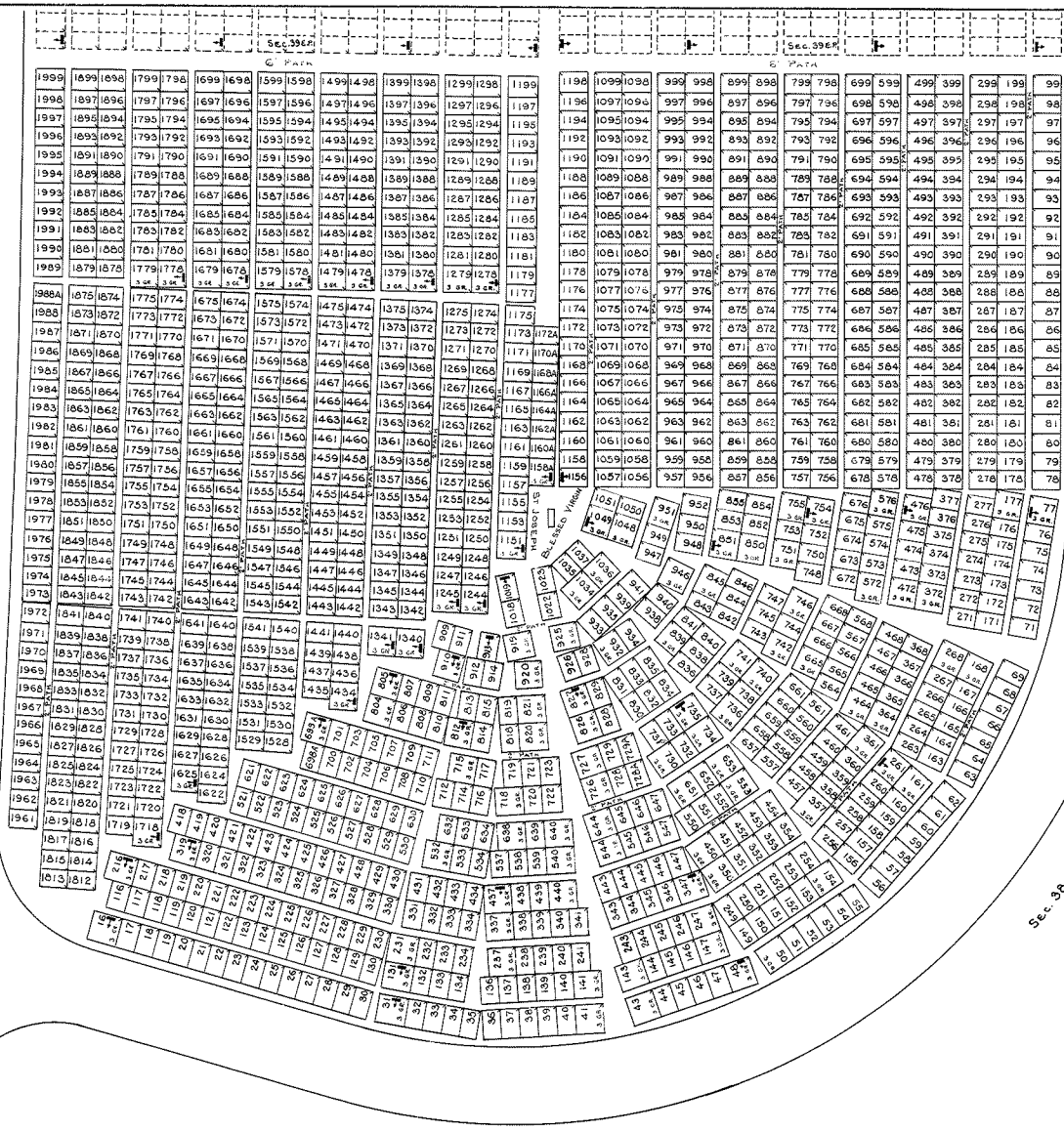
ALL LOTS ARE 2 GR. LOTS EXCEPT AS NOTED.  
 ALL 2 GRAVE LOTS ARE 6' X 9'  
 ALL 3 GRAVE LOTS ARE 9' X 9'

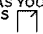

LOT SUMMARY:  
 1727 2 GR. LOTS  
 62 3 GR. LOTS  
 1789 TOTAL LOTS



HOLY CROSS CEMETERY  
 CLEVELAND, OHIO  
 EAST PART  
 SECTION 39  
 SCALE: 1" = 20' T.H. APRIL 7, 1977

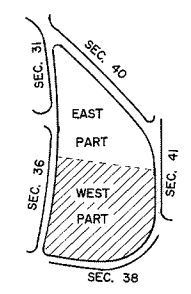
Sec. 36



NOTE:  
 THE LOT NUMBER IS PLACED IN THE UPPER RIGHT  
 HAND CORNER OF LOT AS YOU FACE THE LOT  
 AND IS INDICATED THUS   
 LOCATION OF GR. MARKERS SHOWN THUS   
 ARROW INDICATES DIRECTION GR. MARKERS FACE.  
 ALL LOTS ARE 2 GR. LOTS EXCEPT AS NOTED.  
 ALL 2 GRAVE LOTS ARE 6' X 9'  
 ALL 3 GRAVE LOTS ARE 9' X 9'

LOT SUMMARY:  
 1279 2 GR. LOTS  
 106 3 GR. LOTS  
 1365 TOTAL LOTS

24' EXIT DRIVE



**HOLY CROSS CEMETERY**  
 CLEVELAND, OHIO  
 WEST PART  
 SECTION 39

SCALE 1" = 20' T.H. JAN. 3, 1977

39

HUMMEL RD.

Sec. 41

Sec. 38